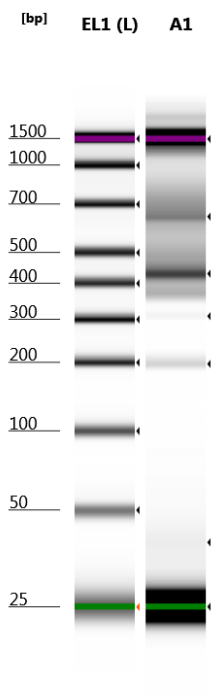


**Filename: Wyoming Core - 2021-02-03 - 12.37.50.D1000**

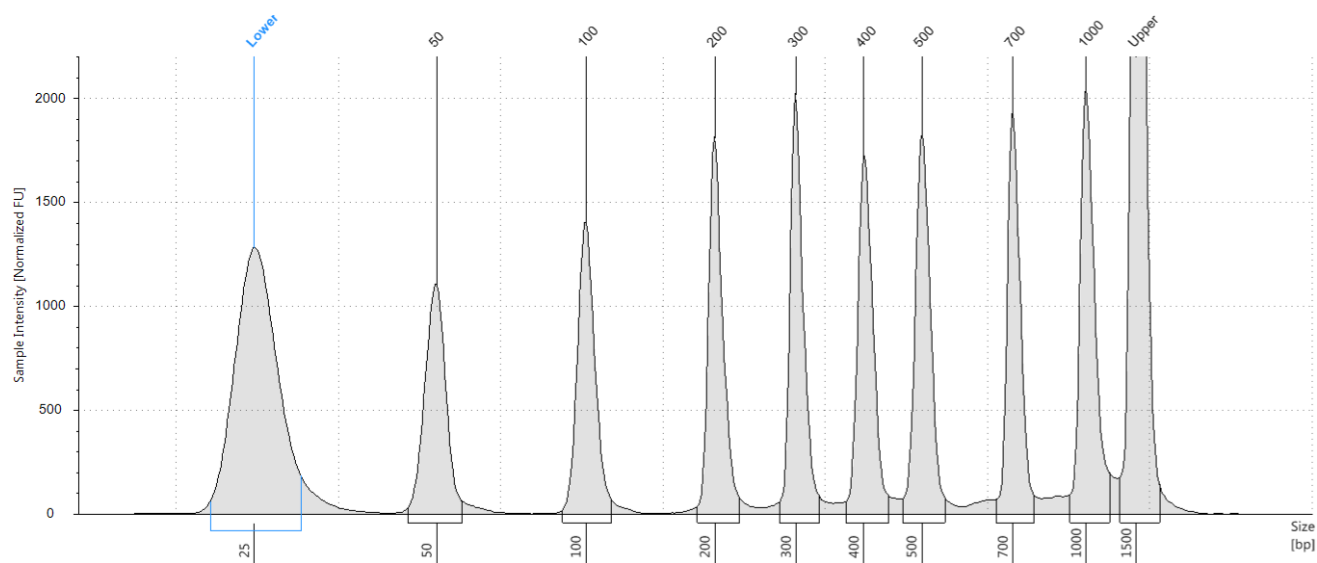


Default image (Contrast 50%), Image is Scaled to Sample

**Sample Info**

Well	Conc. [ng/ul]	Sample Description	Alert	Observations
EL1	20.3	Electronic Ladder		Ladder
A1	2.43	Wyoming		

**EL1: Electronic Ladder**

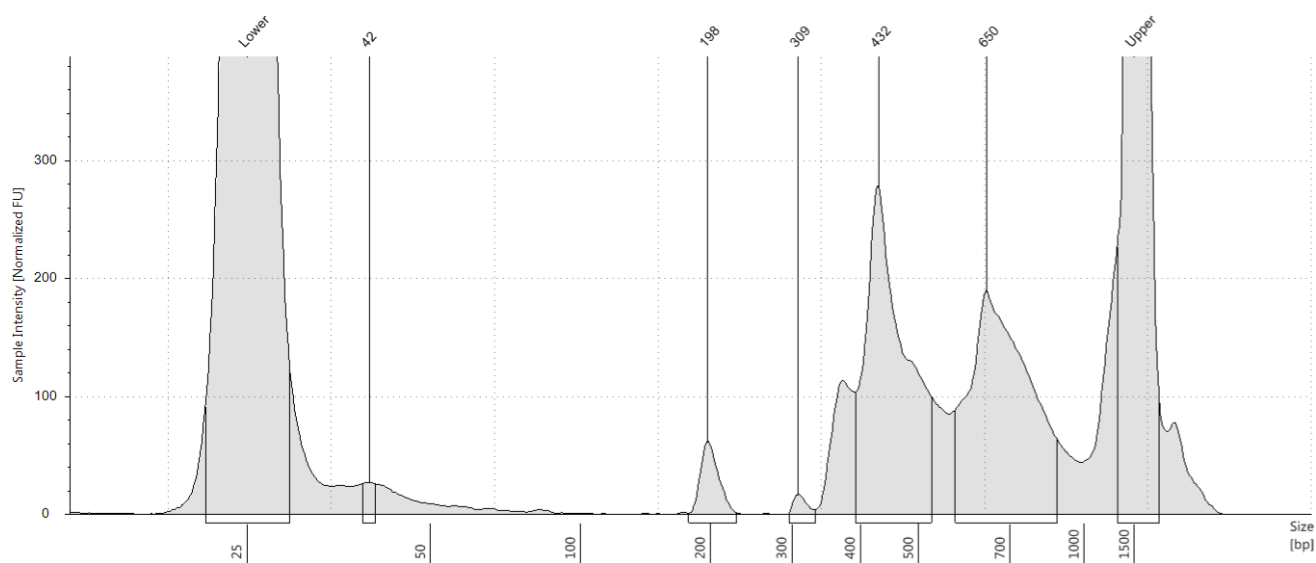


**Sample Table**

Well	Conc. [ng/μl]	Sample Description	Alert	Observations
EL1	20.3	Electronic Ladder		Ladder

**Peak Table**

Size [bp]	Calibrated Conc. [ng/μl]	Assigned Conc. [ng/μl]	Peak Molarity [nmol/l]	% Integrated Area	Peak Comment	Observations
25	5.22	-	321	-		Lower Marker
50	2.25	-	69.3	11.11		
100	2.37	-	36.5	11.71		
200	2.47	-	19.0	12.20		
300	2.55	-	13.1	12.56		
400	2.57	-	9.87	12.66		
500	2.71	-	8.33	13.36		
700	2.46	-	5.41	12.15		
1000	2.89	-	4.44	14.25		
1500	6.50	6.50	6.67	-		Upper Marker

**A1: Wyoming****Sample Table**

Well	Conc. [ng/μl]	Sample Description	Alert	Observations
A1	2.43	Wyoming		

**Peak Table**

Size [bp]	Calibrated Conc. [ng/μl]	Assigned Conc. [ng/μl]	Peak Molarity [nmol/l]	% Integrated Area	Peak Comment	Observations
25	6.37	-	392	-		Lower Marker
42	0.0317	-	1.17	1.30		
198	0.113	-	0.876	4.63		
309	0.0213	-	0.106	0.88		
432	1.11	-	3.95	45.59		
650	1.16	-	2.74	47.59		
1500	6.50	6.50	6.67	-		Upper Marker